

Watertight®

 Premier Tapes
NZ Ltd



Premium Flexible Flashing Tape



200mm x
25 metres



150mm x
25 metres



75mm x
25 metres

Benefits of Watertight®

- 1.2mm thick, with improved nail sealing ability
- +5 C to +50 C application temperature range
- Can be used with any BRANZ-approved building wrap
- Can be used on rigid barriers

Watertight® is a flexible flashing tape used around framed joinery openings as a secondary weather-resistant barrier. It is designed to prevent water penetration around window and door openings at framing junctions, and to keep any water that gets past the cladding or through the joinery from direct contact with the framing to which Watertight® has been applied. It is also used to seal the upstand of window head flashing and meter boxes with built-in flanges to the building underlay. If rigid barriers are used instead of building wrap, Watertight® can

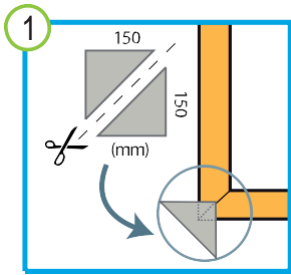
be used to flash the panels, as it can be exposed to direct sunlight for 90 days. Watertight® can be exposed beyond 90 days, but as building wraps need to be replaced after 60 days' exposure, BRANZ has recommended a 90-day maximum. Watertight® is a multi-layered 1.2mm thick flexible flashing tape. The top layer is pure aluminium, and the second layer is made of high-strength polyethylene raffia. The third layer is self-adhesive bitumen improved for New Zealand conditions, while the last layer is made of siliconized polyethylene.

 Premier Tapes
NZ Ltd

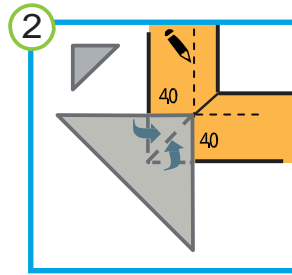
PO Box 20391, Glen Eden
Auckland 0641
www.premiertapes.co.nz

p. 64 09 837 3996
f. 64 09 837 3999
e. info@premiertapes.co.nz

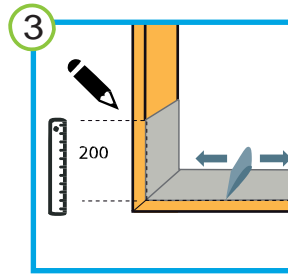
WINDOW AND DOOR FRAME INSTALLATION PROCEDURE



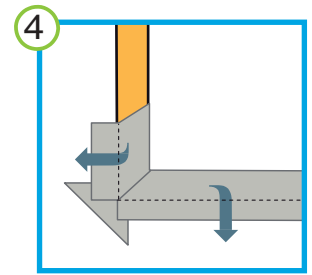
1. Cut a 150mm x 150mm square of *Watertight*® tape into two equal triangular pieces. Install these triangular corner pieces into the bottom corners of the frame opening.



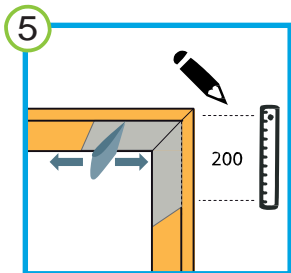
2. Ensure a 40mm apex fitted into the sill and jamb junctions of the frame. Fold the remaining triangular corner flat against the outside face of the building wrap.



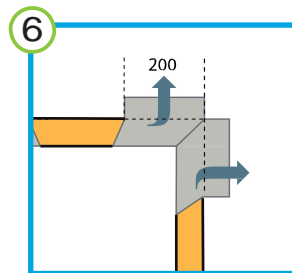
3. Install *Watertight*® to the sill, making sure that it goes along the entire length of the sill and 200mm up each jamb. Use the spatula provided to ensure that the tape is completely pushed into the corners.



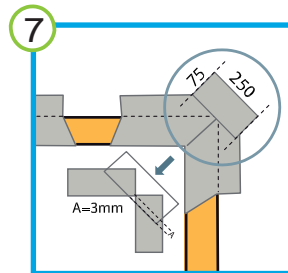
4. At the sill and jamb corners, cut from the external edge of the frame outwards to allow the tape to be folded flat against the outside face of the building wrap.



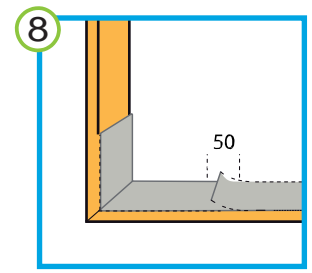
5. Install a 400mm length of *Watertight*® into the top corners of the frame opening, with 200mm down the jamb and 200mm along the lintel. Use the spatula provided to ensure the tape is completely pushed into the corners.



6. At the lintel and jamb corners cut from the external edge of the frame outwards to allow the tape to be folded flat against the outside face of the building wrap.



7. Install a 75mm wide x 250mm long piece of *Watertight*® tape at a 45° angle across the top corner of the frame opening, overlapping the corner by 3mm to create a seal at the top corner junction.



8. Pieces of *Watertight*® can be joined together, but must overlap by a minimum of 50mm or a maximum of 100mm.

THINGS TO NOTE

Watertight® can be used with LOSP-treated timber and steel-framed buildings but ensure that solvent used on treated timber is allowed to dry for at least one week prior to installation.

Watertight® can be installed on porous surfaces. To enhance adhesion, we recommend the use of a primer on all areas to which it will be applied.

Before *Watertight*® is applied, surfaces must be clean, dry and free from any contaminants such as dust, grease or solvents that may cause loss of adhesion.

Watertight® has been designed for New Zealand conditions and has a service life equal to that of the cladding.

Watertight® comes with a 10 year warranty and has a shelf life of 36 months.

OTHER PROFESSIONAL SOLUTIONS



All in ONE • Roof & Wall Wrap at the same price !

- Can be used on LOSP-treated timber and steel-framed buildings.
- Printed side out and the non-printed side to the frame.
- Span no more than 90 cm without mesh support.
- Wall underlay stands 90 days exposure to direct sunlight and UV.
- Roof underlay stands 7 days exposure to direct sunlight and UV.
- Convenient dotted line for high and low pitched roofs and centre width.



PO Box 20391, Glen Eden
Auckland 0641
www.premiertapes.co.nz

p. 64 09 837 3996
f. 64 09 837 3999
e. info@premiertapes.co.nz